



Mississippi View – AmericaView Consortium

Greg Easson, Hal Robinson, H.G. Momm,
Enterprise for Innovative Geospatial Solutions
University of Mississippi Geoinformatics Center
{geasson, hdrobins}@olemiss.edu
www.msview.olemiss.edu – www.eigs.olemiss.edu



Goals

Promote and facilitate geospatial data usage, research and collaboration among the geospatial community in Mississippi while fostering national and international cooperation.

MISSISSIPPI VIEW

The State of Mississippi is home to a broad spectrum of academic, federal, state, and public sector users of remotely sensed data. The University of Mississippi Enterprise for Innovative Geospatial Solutions (EIGS) is a cluster of programs and companies working to further develop the geospatial industry in Mississippi. With more than 35 high-technology companies and six research programs, EIGS encompasses both geospatial science and business. By supporting both entrepreneurs and researchers from universities throughout the state, EIGS strives to make Mississippi a leader in the U.S. geospatial and remote sensing industry. EIGS provides its industry cluster members with access to geospatial and remote sensing research as well as complementary business and marketing support. EIGS was established in 2003 to provide similar but enhanced support previously provided by its predecessor, the Mississippi Space Commerce Initiative (MSCI).

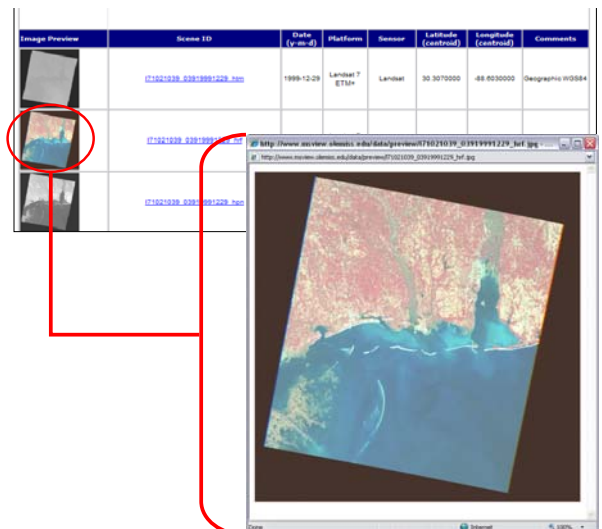
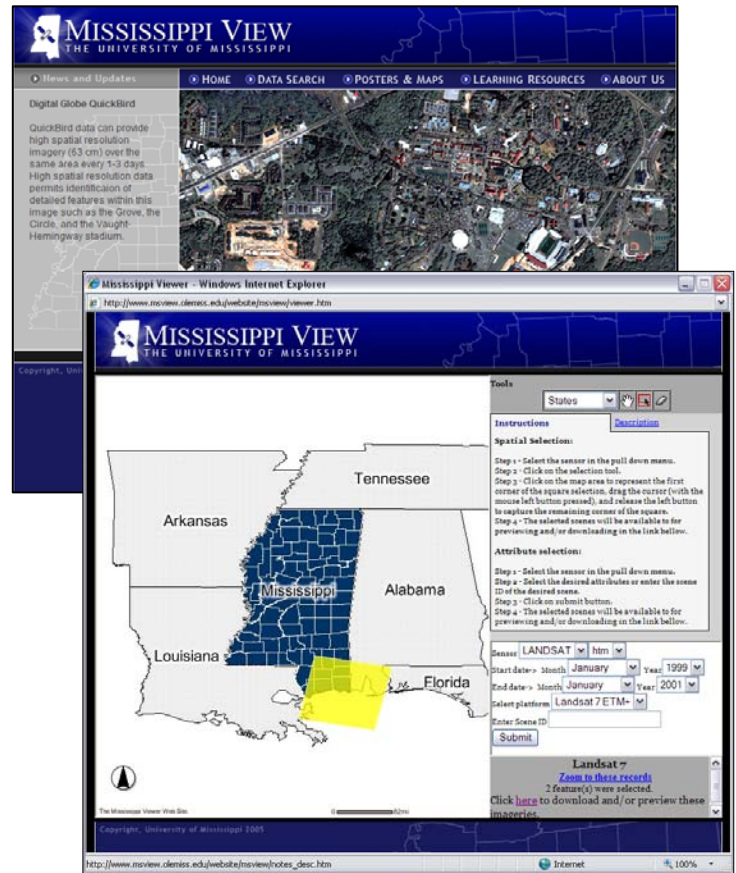
As an Associate Member of the America View program, EIGS has tasked the University of Mississippi Geoinformatics Center (UMGC) to lead the operation and development of the StateView Consortium (MSView) project at the University of Mississippi.

IMAGERY WEBSITE

Mississippi View is a UMGC sponsored application funded in part by a grant from the United States Geological Survey (USGS) – America View Project. The goal of the project is to provide researchers and businesses an "imagery warehouse" of satellite and aerial photography that is freely available for download from the UMGC archives.

By integrating web mapping and relational database technologies, users have been provided two different methods to search the archive. The first is a simple selection by sensor platform and the identification of an "area of interest". The second method involves a set of predefined search parameters

of the image attribute information which will query the dataset and highlight the location of any imagery matching the search criteria



EDUCATIONAL OUTREACH

UMGC and EIGS sponsor various outreach activities ranging from seminars at local schools to certified training courses offered to the general public and the University communities.



One specific program was the MARS program, a high school adoption program with Mississippi high schools from Water Valley, Batesville, Cleveland, Enterprise,

and Claiborne County. The program was funded through EIGS in cooperation with the Institutes of Higher Learning. The participating high schools worked with university/community college partners to design and complete a community-based geospatial information science and technology (GIS&T) project.

As part of the MARS Program, students and city officials from Water Valley recently participated in an Intro to ArcGIS training course in the UMGC Geoinformatics Learning Lab at The



University of Mississippi. A total of eight students and one teacher from Water Valley High School attended the training along with several city employees from Water Valley, including the Mayor, Fire Chief, and employees from the Water Department. This process was used throughout the state at the four other sponsored High Schools.



The Intro to ArcGIS training course covered basic theories involved in Geographic Information Systems (GIS) and introduced basic functions utilized in ESRI's ArcGIS software for GIS analysis. The high school students and

Water Department employees used the GIS training to complete a joint project for collecting locations and other information of fire hydrants.

OTHER ACTIVITIES

UMGC and EIGS sponsor other activities and projects across the state including:

- State-wide licensing program management for the ESRI, Leica and ITT software licensing. *Estimated FY2007 \$23 million in licensing savings for University and Community College systems.*
- Community and University based Research projects. *Support of student projects ranging from rural water association support to change analysis in local communities.*
- Mississippi Emergency Management Agency GIS Disaster Response Support. *EIGS and UMGC affiliated groups supported and continue to support the state of Mississippi in response to events such as Hurricane Katrina.*
- Institutes of Higher Learning Geospatial Council. *EIGS and UMGC serve on the IHL Geospatial Council, coordinating and collaborating with other IHL institutions.*
- Center Funded Research. *UMGC is an independently funded center which conducts research on projects funded by NASA, the Dept. of Energy, the Dept. of Interior, the Dept. of Homeland Security, Federal Highways Administration and other organizations and agencies.*

Collaborators

EIGS State Partners and Organization Members

America View Consortium

Contact Information

For more information please contact:

UMGC@olemiss.edu

Hal Robinson – hdrobins@olemiss.edu or

Greg Easson – geasson@olemiss.edu

www.msview.olemiss.edu.